



Los Angeles Basin Section  
www.laspe.org

# Los Angeles Basin Section Society of Petroleum Engineers

## A Message from the Chair



Hello fellow  
SPE Members-

The 2010 SPE  
Western  
Regional  
Meeting  
(WRM) in

collaboration with the Pacific Section AAPG and Cordilleran Section GSA is coming together thanks to all the committee members and volunteers. I would like to recognize AB Gorashi, Board of Directors, for taking the lead on organizing the LASPE/ PTTTC Regional Workshops, contacting and accommodating all the speakers, preparing all the material, and finalizing all the preparations. Rick Finken, who is are WRM Treasure has also been in the loop in all business affairs and has done a great job of keeping track of our expenses. Also a Thanks to Scott Hara who has been working with AB to make sure the workshops and field trip items have been finalized.

Please continue to check our website/newsletter for the list of the WRM Short Courses. I urge everyone to inform your colleagues and friends to sign up for the workshops to help support SPE as the fees from the classes and field trips will assist the LA SPE Section with all the costs associated with the WRM.

Announcements: During our February board meeting, LASPE appointed and voted Mike Utt, active board member, to serve as the Vice Chairperson for the 2009-2010 year. Tasks include running the monthly Board meetings when I am absent and working with the Chairperson on all section chair responsibilities. He will also serve as LA Section Chairperson starting September 2010 through October 2011 and I will step down to Senior Chairperson. Thank you, Mike.

February 15, 2010, was the deadline to nominate someone for the 2010 SPE International Awards.

*continues page 2...*

### Contents

Petroleum Technology Forum  
March 9 "Injection Project Application  
Data Requirements."  
pages 1 & 3

LASPE Golf Tournament  
Calendar  
page 2

Photos from Petroleum Technology  
Forum February 9  
page 4

Crude Price Challenge RETURNS!  
page 5

LASPE Scholarships Available  
page 6

WRM Program May 25-26th  
page 7 to 19

LASPE Board Meeting Summary for  
February 9th  
pages 20 & 21

Dr. Withjack to Japan  
page 22

Position Available & Services Offered  
page 23

### PETROLEUM TECHNOLOGY FORUM PROGRAM, MARCH 9, 2010

The next **Petroleum Technology Forum** will be held on **Tuesday, March 9, 2010** at the Long Beach Petroleum Club, 3636 Linden Avenue, Long Beach, CA 90807. The speakers will be **Marilu Habel and Burt Ellison** of the CA DOGGR, who will be giving a presentation on **Injection Project Application Data Requirements**. **Abstract & bio follow on Page 3...**

<u>Location:</u>	<u>Time:</u>	<u>Cost:</u>
Long Beach Petroleum Club 3636 Linden Avenue Long Beach, CA 90807	Registration: 11:30 AM Buffet Lunch: 11:30 AM Presentation: 12:00-1:00 PM	\$20.00 members, Free for students.

## Message from the Chair

...continued from page 1

I appreciate those who took the time to nominate and recognize their fellow SPE colleagues that go above and beyond to make sure that the society remains strong. The awards enable us to recognize distinguished members for their many contributions to the society.

### Science Fair News:

On March 2, 2010, Jack Smith and myself, presented The Long Beach Unified School District (LBUSD) with a check for \$1000 to help support Science Fair projects. SPE's generous donation helps provides for the students awards and encourages students to consider careers in Science, Engineering, and Technology by experiencing how scientists think and conduct experiments. Motivating and stimulating the student interest in the field of science will allow them to be aware of great opportunities in the petroleum industry. SPE proactively supports LBUSD each year.

If you have any feedback to improve the LA SPE Section or would like to volunteer in our Student Outreach Program, Science Fair and Scholarship Committees, Young Professionals, and/or Golf Tournament Committee, please contact me. Thanks again for attending our SPE forum meetings.

See you all on March 9, 2010, Forum Meeting.

Vanessa Perez-SPE Chairperson

## Calendar

### March 9th

LASPE Board Meeting  
Petroleum Technology Forum at The Long Beach Petroleum Club

### May 7th

Annual LA Basin SPE Charity Golf Tournament  
Los Serranos Country Club Golf Course  
Chino Hills, CA

### May 27-29th WRM Anaheim, CA

LASPE and the AAPG, Pacific Section will host the Western Regional Meeting at the Anaheim Convention Center.

### June 8th

Crude Price Challenge Winner Announced

## >>>>> ANNUAL GOLF TOURNAMENT AND FUNDRAISER <<<<<<



The Annual LA Basin SPE Charity Golf Tournament is set for May 7th, 2010. Once again we will be returning to Los Serranos Country Club in Chino Hills, for this great event. There is the pre-tournament BBQ, provide to us once again by Weatherford, golf is scheduled for a 1:00 shotgun start and for golfers and non-golfers

alike the always exciting Awards Banquet and Raffle will follow. T

This event is more than just golf; it is our major fund raiser of the year and provides the section with a large portion of the LA Basin's operating funds. Make your plans to attend early - teams have already started signing up. We expect this event to sell out, so don't get left out.

Contact Mark Shemaria at [markshemaria@yahoo.com](mailto:markshemaria@yahoo.com) or Mike Filbey, [mike\\_filbey@oxy.com](mailto:mike_filbey@oxy.com) for more information or sponsorship opportunities.



Tickets available on [www.LASPE.org](http://www.LASPE.org)

FORUM FROM PAGE 1 . . .

## **Injection Project Application Data Requirements**

### **What is behind injection project review and why does it take so long?**

by Marilu Habel and Burt Ellison of the CA DOGGR

#### **Abstract:**

The Division of Oil, Gas, and Geothermal Resources (Division) is the principle permitting agency for the injection of oilfield related fluid for enhanced recovery or disposal in California. Injection project approval is a two step process that involves the submittal of a project application and, after approval, individual well permitting. One of the most common reasons for injection project application delays is incomplete data and problems with casing cementing gaps in wells within the project area of influence. This presentation will attempt to explain the Division's project review process with an emphasis on data elements most often deficient. In conclusion, the presentation will provide insight and advice to operators seeking injection project approval that can streamline the permitting process.

#### **Biography:**

##### **Marilu Habel**

Marilu is an Associate Engineer with the Division of Oil, Gas, and Geothermal Resources in Sacramento. A graduate of UC Davis in geology, Ms. Habel has worked for the Division in Bakersfield and Ventura district offices. Ms. Habel has worked in the Underground Injection Control Program since the Division received Primacy from the USEPA in 1984. For the past few years she has coached the Special Olympics Snowshoe Team in Placer County.

##### **Burt Ellison**

Burt is a Senior Oil and Gas Engineer with the Division in Bakersfield. He started with the Division in District 1 (Cypress) in 1989 and transferred to Bakersfield in 1992. He currently directs the District's Environmental program, Idle and Orphan

Wells program, CEQA and Construction Site Review program, and Pipeline testing program. Burt has a degree in Geology from California State University, Bakersfield and is a Registered Professional Geologist.

#### **Forum Chair Announcement:**

There will be plenty of free parking. Registration starts at 11:30 AM, with buffet lunch at noon followed by our featured presentations.

Due to expected greater attendance at this meeting your RSVP would be greatly appreciated. Feel free to respond directly to this e-mail.

We will also have Core Labs raffling off one **FREE** attendance to their upcoming Core Lab School !!!

Please see the attached flyer at end of newsletter.

We look forward to seeing you at the forum!

Katherine Wallgren  
Forum Chairperson  
[Katherine\\_Wallgren@oxy.com](mailto:Katherine_Wallgren@oxy.com)

Visit [www.LASPE.org](http://www.LASPE.org)

**PETROLEUM TECHNOLOGY FORUM  
PHOTOS FROM FEBRUARY 9TH PRESENTATION**

**AN ACCURATE PHYSICAL MODEL: ESSENTIAL FOR THE ECONOMIC  
DEVELOPMENT OF COMPLEX RESERVOIRS**

by Paul Branagan, Branagan and Associates



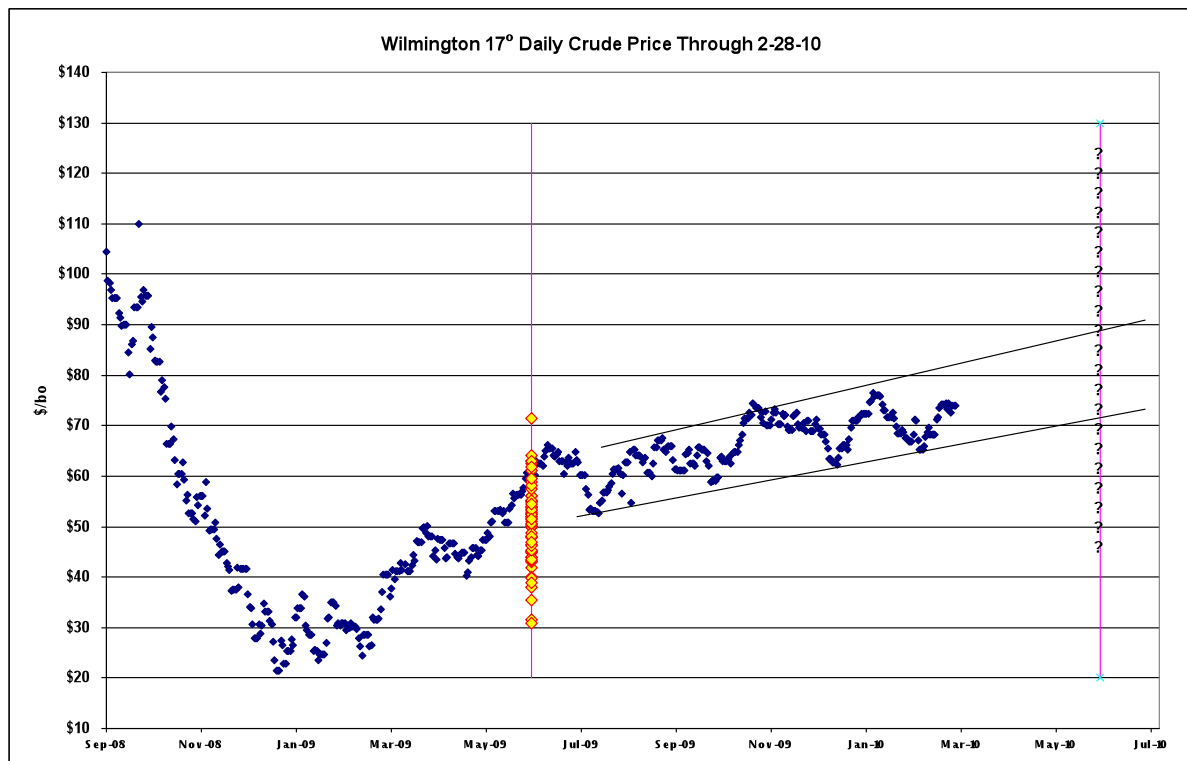
**LASPE 2010 CRUDE PRICE CHALLENGE**

Join in! LASPE 2010 Crude Price Challenge

The price of Wilmington 170 Crude has been on the upward trend for well over a year now with a steady, “saw tooth” rise since last July. Join the “LASPE Forecast Club” and predict the price on June 1, 2010. You will win bragging rights, Gift Certificates and a useful and handsome trophy! Winners will be announced at the June 8th LASPE Forum.

- Contest Rules -

- Price basis is Union 76 Posting for Midway-Sunset 130 crude with a 45 cent price differential available at <http://wh.conocophillips.com/buy/postings/union76.asp>
- Enter by filling out the entry form available at the March, April and May Monthly Petroleum Technology Forums or by emailing your forecast \$/bo to Rick Finken at [richard.finken@longbeach.gov](mailto:richard.finken@longbeach.gov)
- One entry per person.
- Entry deadline is 11:59PM Tuesday, May 11, 2010.
- Winners will be announced at the June 8, 2010 Monthly Petroleum Technology Forum. Winners need not be present, but:
- The \$25 1st Prize for the closest value doubles if present on June 8th and triples with your receipt from the March 9th kick-off meeting. There will also be a 1st prize trophy.
- \$25 2nd Prize for next closest value
- There will be only one 1st and 2nd prize – earliest date or email timestamp wins in case of duplicate winners.



## **LASPE OFFERS FALL 2010 SCHOLARSHIPS! APPLY NOW**

The Los Angeles Basin of the Society of Petroleum Engineers is now accepting applications for Scholarships for the 2010/2011 school year.

Local students who are classified as undergraduates and graduate students at the beginning of the 2010 fall semester attending may be eligible for these scholarships. There are four types of scholarships available through the section:

- Mei Chang Memorial Scholarship: \$500 awards are available for high school graduates entering college in the fall of their graduating year or following year. This scholarship is a tribute to Ms. Mei Chang, a Sr. Research Scientist with Chevron. She is remembered for her steady contributions to LASPE and for tutoring science and math high school students. The awards are available to children, grandchildren and siblings of LASPE members or local students sponsored by LASPE members in good standing (subject to board approval).
- Undergraduate Scholarships: \$500 scholarships are available for undergraduate college students pursuing petroleum engineering or geology, chemical, civil, mechanical, environmental or related engineering curriculums. The awards are available to active LASPE student members or SPE student members attending southern California colleges or universities.
- Graduate Scholarships: \$1,000 scholarships are available for college graduate students pursuing studies or conducting research in energy and petroleum related subjects. The awards are available to active LASPE student members or SPE student members attending southern California colleges or universities.
- Bruce Davis Memorial Scholarship: \$1,000 award is available for a USC student pursuing graduate studies in petroleum related fields, chemical engineering and chemistry. Dr. Davis, a 26-year employee of Chevron, considered himself an experimental chemist and wished to encourage students with science backgrounds to pursue a future career in the Petroleum Industry.

In addition to the above scholarships available through the section, the SPE Foundation annually awards the Gus Archie Memorial Scholarship, a four-year, \$6,000 annual grant to the outstanding college freshman pursuing an undergraduate degree in petroleum engineering. If you or your students would like more information on these scholarships, as well as the guidelines and qualifications, please go to:

<http://www.laspe.org/scholarship/scholarship.html>

The deadline for the submittal of the application is April 9, 2010. Depending on the number of applicants an interview may be required. The students will be notified of the results after the SPE Board meeting on May 10, 2010. If you have any questions about the scholarships contact:

Jack L. Smith  
SPE Scholarship Chairman c/o California State Lands Commission  
200 Oceangate, 12th Floor  
Long Beach, CA 90802-4331  
Tel: (562) 590-5270  
Email: [smithjl@slc.ca.gov](mailto:smithjl@slc.ca.gov)

## **2010 SPE WESTERN REGIONAL MEETING**

**Anaheim Convention Center, May 25-26**

### **Program at a Glance**

**Tuesday, 25 May, 08:30 to 17:00**

Short Courses

Field Trip

**Wednesday, 26 May 08:30 to 17:00**

Short Courses

Field Trip

**Wednesday, 26 May 08:30-17:00**

Western Region North America Student Paper Contest (Host Schools USC and CSLB)

**Thursday and Friday 27-28, May 2010 08:30-17:00**

**Technical Sessions and Exhibits**

**Thursday 27 May 13:30-17:00**

Special AAPG-SPE Joint Session

**Thursday May 27 May 12:00-13:30**

Poster Session

**Friday 28 May 12:00-13:30 Awards Luncheon**

Keynote Speaker: Mr. Stephen Chazen, President and Chief Financial Officer of Occidental Petroleum Corporation

## **2010 SPE WESTERN REGIONAL MEETING**

**Anaheim Convention Center, May 25-26**

### **Continuing Education Program**

**The following technical workshops and field trips are planned. Details will be forthcoming.**

1-Petroleum Reserves and Economics Fundamentals Richard Miller: Richard Miller and Associates,

2-Streamline Simulation for Reservoir Surveillance and Flood Management Marco Thiele: Streamsim Technologies

3-Oil and Gas Environmental Technologies  
Sam Sarem: President, Improved Petroleum Recovery Consultants

4-Thermal Recovery -  
Anthony R. Kovscek: Professor, Stanford University

5-Introductory Workshops  
Drilling Engineering 101  
Val Lerma: President, Orchard Petroleum

6-Introduction to Petroleum Engineering  
Mason Mehdizadeh: Professor Cal Poly SLO

7-Intro to Well Logging,  
Janice Gillespie: Professor, CSU Bakersfield,

8-Geology for the Non-Geologist,  
Janice Gillespie: Professor, CSU Bakersfield

9-Facility Engineering Design  
Lisa Denke: Project Manager, DCCK Engineering

### **Field Trips**

A - Los Angeles Basin Urban Oil Field Tour  
John Jepson: City of Long Beach; and Don Clarke: Consultant

B - Coastal Oil Operations Tour of Oxy's Thums Island, Wilmington Field and Aera's Huntington Beach Field Kate Wallgren and Brandy Fellers: Oxy Long Beach Inc; and Anthony McDaniels: Aera Energy



**2010 SPE WESTERN REGIONAL MEETING**

**Anaheim Convention Center, May 25-26**

**Thursday, 27 May, 08:30 to 12:00 Room A**

**08:30 to 10:00**

**PLENARY: OPPORTUNITIES AND CHALLENGES IN THE WESTERN NORTH AMERICAN REGION**

**Moderators:** Behrooz Fattahi, Aera Energy LLC  
Raj Upadhyay, Energy Development Group

**Panelists:** Steven P. Rusch, Plains E&P Co  
Barry Jay Biggs, Aera Energy LLC  
Neal E. Schmale, Sempra Energy  
Chris E. Williamson, BreitBurn Management Co  
John Dennis, BP Alaska  
Todd Alan Stevens, OCCIDENTAL PETROLEUM CORP

**Thursday, 27 May, 10:30 to 12:30**

**Room A**

**ARCTIC OPERATIONS/PERMAFROST ISSUES/HYDRATES**

**Session Chairpersons:** Abhijit Yeshwant Dandekar, U. of Alaska  
Santanu Khataniar, U. of Alaska

- |      |        |                                                                                                                                                                                                                            |
|------|--------|----------------------------------------------------------------------------------------------------------------------------------------------------------------------------------------------------------------------------|
| 1030 | 133592 | <b>Alaskan Heavy Oil: First CHOPS at a vast, untapped arctic resource</b> • J.P. Young, BP; W.L. Mathews, BP Exploration (Alaska) Inc.; M. Pietrobon, BP                                                                   |
| 1100 | 133601 | <b>Evaluation of two North Slope, Alaska, deposits for a potential longterm test of gas production from hydrates</b> • G.J. Moridis, M.T. Reagan, Lawrence Berkeley Laboratory.                                            |
| 1130 | 132649 | <b>The Effect of Reservoir Heterogeneity on Gas Production From Hydrate Accumulations in the Permafrost</b> • M.T. Reagan, G.J. Moridis, M.B. Kowalsky, Lawrence Berkeley Laboratory; S. Silpngarmiert, ConocoPhillips Co. |
| 1200 | 133573 | <b>Study on PoreScale Distribution of Frozen Water and its Effect on Relative Permeability of Oil in Permafrost Reservoir Rocks</b> • K.K. Venepalli, U OF ALASKA.                                                         |

**Thursday, 27 May, 08:30 to 12:00**

**Room B**

**ADVANCES IN DRILLING AND COMPLETION TECHNOLOGY**

**Session Chairpersons:** Paul J. Durning, Consultant  
Michael Ernest Utt, Consultant

- |      |        |                                                                                                                                                                            |
|------|--------|----------------------------------------------------------------------------------------------------------------------------------------------------------------------------|
| 0830 | 132410 | <b>Addressing Horizontal Steam Injection Completions Challenges With Chevron's Horizontal Steam Test Facility</b> • J.H. Fram, J.C. Sims, T.C. Mayer, A. Sequera, Chevron. |
| 0900 | 134021 | <b>Catalytic Properties of Clay Based Hybrid Materials for Drilling Operations</b> • J. Lee, university of Pittsburgh.                                                     |

**2010 SPE WESTERN REGIONAL MEETING**

**Anaheim Convention Center, May 25-26**

**Operations** • J. Lee, university of Pittsburgh.

- 0930 132644 Thermal Modeling of Drilling into Steam Chambers** • T.J. Hallman, RPS Energy; R.R. MacDonald, APA Petroleum Engineering Inc.; J. Gerlitz, Suncor Energy Inc; G. Hareland, U. of Calgary.
- 1030 132685 Method for Minimizing Liner Expansion Issues in Horizontal Thermal Applications** • T.W. Cavender, Halliburton; R.L. Schultz, Halliburton Energy Services Group.
- 1100 132098 An Improved Laboratory Method to Estimate Flow Initiation Pressures and Return Permeabilities During Flowback** • A. Suri, M.M. Sharma, University of Texas.
- 1130 133596 Development and Field Pilot of a Novel Viscoelastic Anionic Surfactant (VAS) Fracturing Fluid** • B. Bai, J. Zhang, S. Zhang, Missouri U of Science & Tech.

**Alternate**

- 132372 Directional Hole Cleaning Process Review: A Systematic View** • T. Nazari, G. Hareland, U. of Calgary.

**Thursday, 27 May, 08:30 to 12:00**

**Room C**

**RESERVOIR CHARACTERIZATION**

**Session Chairpersons:** **A. M. Sam Sarem, Improved Petr Recvry Conslt**  
**Hilario Camachofernandez, Signal Hill Petroleum**  
**Inc.**

- 0830 132596 Best Practices in Testing and Analyzing Multilayer Reservoirs** • Y. Pan, Chevron ETC; M. Sullivan, D. Belanger, Chevron Corp.
- 0900 132654 Integration Of 3D Seismic Attributes Into Stochastic Reservoir Models Using Iterative Vertical Resolution Modeling Methodology** • J. Wang, Q. Dou, Schlumberger.
- 0930 132467 Robust Well Test Interpretation Using Nonlinear Regression With Parameter and Data Transformations** • A. Dastan, Stanford University; A. Tarantola, Institut de Physique du Globe de Paris; R. Horne, Stanford U.
- 1030 132229 Effect of Fracture and Flow Orientation on TwoPhase Flow in an OilWet Fracture: Relative Permeability Curves and Flow Structures** • S. Shad, B.B. Maini, I.D. Gates, U. of Calgary.
- 1100 132513 Application of Lithofacies Models to Characterize Unconventional Shale Gas Reservoirs and Identify Optimal Completion Intervals** • A. Mitra, Baker Hughes; D.S. Warrington, Baker Atlas; A. Sommer, Baker Hughes.
- 1130 132110 Development of Petrophysical Stress Models for Conversion of Core Porosity and Permeability Data From Ambient to Reservoir Conditions: A New Hybrid Approach** • S.O. Williams, M. Solanki, S.I. Batarseh, Aera Energy LLC.

**2010 SPE WESTERN REGIONAL MEETING**

**Anaheim Convention Center, May 25-26**

**Thursday, 27 May, 13:30 to 17:00 Room A**

**EOR TECHNOLOGIES I**

**Session Chairpersons:** Edward John Behm, Occidental Oil & Gas Corporation  
Kristian Jessen, Univ. of Southern California

- |      |        |                                                                                                                                                                                |
|------|--------|--------------------------------------------------------------------------------------------------------------------------------------------------------------------------------|
| 1330 | 132622 | <b>Modeling GasPhase Mass Transfer Between Fracture and Matrix in Naturally Fractured Reservoirs</b> • A. Jamili, G. Willhite, U. of Kansas; D.W. Green, U. of Kansas.         |
| 1400 | 133471 | <b>Effect of Elasticity during Viscoelastic Polymer Flooding A Possible Mechanism of Increasing the Sweep Efficiency</b> • E. Kuru, J.J. Trivedi, UNIVERSITY OF ALBERTA.       |
| 1430 | 133599 | <b>Effect of Interstitial Water Saturation and Air Flux on Combustion Kinetics of High Pressure Air Injection (HPAI)</b> • Y. Barzin, ; R.G. Moore, S.A. Mehta, U. of Calgary. |
| 1530 | 133598 | <b>Feasibility Investigation of CO2 Miscible Flooding in South Slattery Minnelusa Reservoir, Wyoming</b> • P. Gao, U. of Wyoming.                                              |
| 1600 | 132441 | <b>Parallel Simulations of CommercialScale Polymer Floods</b> • M. Delshad, C. Yuan, M.F. Wheeler, U. of Texas at Austin.                                                      |
| 1630 | 132619 | <b>Novel InSitu Combustion Technique Using a SemiPermeable Colloidal System</b> • P.S. Limkar, DELFT U OF TECHNOLOGY.                                                          |

**Thursday, 27 May, 13:30 to 17:00 Room B**

**MATURE WATERFLOOD MANAGEMENT**

**Session Chairpersons:** Keshav Narayanan, Occidental Oil & Gas Corporation  
Zhengming Yang, Aera Energy LLC

- |      |        |                                                                                                                                                                                                                                                            |
|------|--------|------------------------------------------------------------------------------------------------------------------------------------------------------------------------------------------------------------------------------------------------------------|
| 1330 | 132609 | <b>Optimizing Volumetric Sweep Efficiency in Waterfloods by Integrating Streamlines, Design of Experiments, and Hydrocarbon FPHI Curves</b> • O. Izgec, M. Sayarpour, G.M. Shook, Chevron ETC.                                                             |
| 1400 | 133407 | <b>A New Diagnostic Tool for Performance Evaluation of Mature Heavy Oil Waterfloods: Case of Western Canadian Heavy Oil Reservoirs</b> • F. Ahmadloo, K. Asghari, U. of Regina; G. Renouf, Saskatchewan Research Council.                                  |
| 1430 | 132699 | <b>Waterflood Tomography: Mapping High Contrast Permeability Structures Using Injection/Production Data</b> • Y. Lin, A. Ortega, ; A.M. Nejad, I. Ershaghi, U. of Southern California.                                                                     |
| 1530 | 132625 | <b>A Multivariate Autoregressive Model for Characterizing Producerproducer Relationships in Waterfloods from Injection/ Production Rate Fluctuations</b> • K. Lee, A. Ortega, N. Jafroodi; I. Ershaghi, U. of Southern California.                         |
| 1600 | 132524 | <b>A More Complete Model for Injection Well Testing that Includes the Effects of Solids Deposition, TwoPhase Flow and InjectionInduced Fractures</b> • A. Suri, U. of Texas at Austin; M.M. Sharma, University of texas, petroleum engineering Department. |

## 2010 SPE WESTERN REGIONAL MEETING

Anaheim Convention Center, May 25-26

1630 132359 **Identifying Injector/Producer Relationship in Waterflood Using Hybrid Constrained Nonlinear Optimization** • H. Lee, K. Yao, USC ISI; O. Okpani, A. Nakano, I. Ershaghi, U. of Southern California.

Alternate

133567 **Data Driven Mapping of Liquid Saturation in Waterfloods using Injection and Production Data** • H. Shiranimehr, N. Jafroodi, P. Ghods, M. Javaheri, F. BanaeiKashani, University of Southern California; R. Beierle, Montana Tech.; I. Ershaghi, C. Shahabi, University of Southern California.

132351 **Monitoring Water Front Advance and Bilinear Flow Behaviour on Pressure Transient Tests in Horizontal Wells** • J. Siavoshi, Husky Energy Inc.

Thursday, 27 May, 13:30 to 17:00

Room C

### ECONOMIC UNCERTAINTY AND RISK ANALYSIS

Session Chairpersons: **Ahmed Badruzzaman, CHEVRON ETC ,  
Dale Julander, Chevron North America E & P**

1330 132629 **Intelligent Model Management And Visualization For Smart Oilfields** • C. Chelmis, USC; A. Bakshi, F. Seren, Chevron North America Exploration and Production; V. Prasanna; K. Gomadam, University of Southern California.

1400 133507 **Reservoir Performance Analysis: A Non-Simulation Based Case Study of a Mature Oil Field in California with both Old and New Completions** • H. Rassamdana; A.W. Reid, M.M. Voskanyan, CA State Lands Commission

1430 134005 **A Method To Quickly Estimate The Probable Value of A Shale Gas Well** • E.L. Dougherty, Jincal Chang, Maraco Inc.

1530 133626 **Integrated Risk Analysis Criteria for Managing Exploration and Development of Oil and Gas Assets** • H.A. Belhaj, The Petroleum Institute; M.R. Haroun, Univ of Southern California; T. Lay, Dalhousie University, Canada.

1600 133344 **Quantifying The Fate Of Hydrate Inhibitor in an HPHT Gas Condensate Subsea Tieback** • J.J. Wylde, Clariant Oil Services

1630 132376 **An Alternative Project Economic Measurement For Improved Results** • R. Schaaf, Aera Energy LLC.

Thursday, 27 May, 13:30 to 17:00

Room D

### SPE-AAPG Joint Panel Session

**Integrated Reservoir Modeling, linking static and dynamic models to enhance recovery**

Session Chairpersons: **Fred Aminzadeh (USC) and Tad Gladczenko (Chevron ETC)**

## 2010 SPE WESTERN REGIONAL MEETING

**Anaheim Convention Center, May 25-26**

This session focuses on the multi-disciplinary work by geoscientists and engineers for effective reservoir characterization using static and dynamic modeling. The results of such integrated work could be demonstrated by recent case histories in oil and gas fields in California and other parts of the Western Region where improvements in the recovery factor or production from new reservoir compartments have been achieved. Other topics would include the predictive capacity of reservoir models to test new drilling patterns, planning optimum injection parameters for enhanced oil recovery, or use of time lapse data for monitoring reservoir performance.

**Friday, 28 May, 08:30 to 12:00**

**Room A**

### ADVANCED RESERVOIR MODELING CONCEPTS

**Session Chairpersons:** George J Moridis, Lawrence Berkeley National Laboratory  
Allan Spivak, BreitBurn Management Co

- |      |        |                                                                                                                                                                                                                                                                                                          |
|------|--------|----------------------------------------------------------------------------------------------------------------------------------------------------------------------------------------------------------------------------------------------------------------------------------------------------------|
| 0830 | 133560 | <b>Parameterization techniques to improve mass conservation and data assimilation for ensemble Kalman filter</b> • Y. Chen, Chevron; D.S. Oliver, The University of Oklahoma.                                                                                                                            |
| 0900 | 133595 | <b>Density of high pressure and temperature gas reservoirs: Effect of nonhydrocarbon contaminants on density of natural gas mixtures</b> • F. Tabasinejad, Y. Barzin, S.A. Mehta, R.G. Moore, K.C. Van Fraassen, U. of Calgary; J.A. Rushing, Anadarko Petroleum Corporation; K.E. Newsham, Apache Corp. |
| 0930 | 132093 | <b>Accurate Simulation of Non Darcy Flow in Stimulated Fractured Shale Reservoirs</b> • B. Rubin, Computer Modelling Group Inc.                                                                                                                                                                          |
| 1030 | 133605 | <b>Assisted History Matching of a Waterflooded Reservoir Using Extended and Unscented Kalman Filters</b> • P. Ghods, H. Jahangiri, D. Zhang, U. of Southern California.                                                                                                                                  |
| 1100 | 132643 | <b>Intelligent Time Successive Production Modeling</b> • Y. Khazaeni, S.D. Mohaghegh, West Virginia U.                                                                                                                                                                                                   |
| 1130 | 132642 | <b>A Hierarchical Assisted History Matching Approach With Global and Local Parameter Updates</b> • A. DattaGupta, J. Yin, H. Park, Texas A&M U.                                                                                                                                                          |

**Alternate**

- |        |                                                                                                                                                                                                                                           |
|--------|-------------------------------------------------------------------------------------------------------------------------------------------------------------------------------------------------------------------------------------------|
| 132621 | <b>New Insight Into Integrated Reservoir Management Using TopDown, Intelligent Reservoir Modeling Technique: Application to a Giant and Complex Oil Field in the Middle East</b> • A. Kalantari Dahaghi, S.D. Mohaghegh, West Virginia U. |
|--------|-------------------------------------------------------------------------------------------------------------------------------------------------------------------------------------------------------------------------------------------|

**Friday, 28 May, 08:30 to 12:00**

**Room B**

### CO2 CAPTURE/STORAGE AND EOR

**Session Chairpersons:** William Barrett Occidental Petroleum Corp.  
Zuwa S Omoregie, Occidental Petroleum Corp.

**2010 SPE WESTERN REGIONAL MEETING**

**Anaheim Convention Center, May 25-26**

- 0830 132404 **Integrated Characterization and Simulation of the Fractured Tensleep Reservoir at Teapot Dome for CO2 Injection Design** • A. Ouenes, Prism Seismic; T.C. Anderson, Rocky Mountain Oilfield Testing Center; D. Klepacki, Prism Seismic; G.C. Robinson, Degolyer & MacNaughton; A. Bachir, D. Boukhelf, Prism Seismic; B.J. Black, Rocky Mountain Oilfield Testing Center; V.W. Stamp.
- 0900 132656 **BasinWide Pressure Changes Due to CO2 Storage: California Production as a Reverse Analog** • P. Jordan, Lawrence Berkeley Laboratory
- 0930 132607 **Effect of Gravity, Flow Rate, and Small Scale Heterogeneity on Multiphase Flow of CO2 and Brine** • C. Kuo, J. Perrin, S.M. Benson, Stanford U.
- 1030 132447 **Comparison of Chemical and Hysteresis CO2 Trapping in the Nugget Formation** • S. Behzadi, U OF WYOMING
- 1100 133621 **Optimizing CO2EOR realtime management to increase "green oil" production The Elk Hill case study** • M.R. Haroun, Univ of Southern California; H.K. Sarma, B. Ghosh, The Petroleum Institute.
- 1130 132442 **A Critical Assessment of CO2 Injection Strategies in Saline Aquifers** • M. Delshad, X. Kong; M.F. Wheeler, U. of Texas at Austin.

**Friday, 28 May, 08:30 to 12:00 Room C  
CALIFORNIA MONTEREY RESERVOIRS**

**Session Chairpersons: Steve Horner, Venoco, Inc.  
Gary D. Lower, Venoco Inc.**

- 0830 132411 **TemperatureInduced Fracture Reconsolidation of Diatomaceous Rock During Forced Water Imbibition** • A.R. Kovscek, J. Peng, Stanford U.
- 0900 133378 **Reconfiguring a California Platform for Offshore Crude Dehydration and Water Disposal via Injection** • T.C. Frankiewicz, Spec Services Inc.; R. VanNostrand, Venoco Inc.; R. Manning, Contract Engineer.
- 0930 133613 **Permeability Estimates for the South Ellwood Fault** • J. Boles, Univ of Santa Barbara, S.G. Horner, Venoco Inc. ; G. Garven, Tufts University
- 1030 133132 **The Effect of Temperature and Oil Viscosity Reduction on Water Imbibition of Diatomite** • A.R. Kovscek, B. Vega, Stanford U.; A.H. Urdaneta, Aera Energy LLC.
- 1100 132652 **Effective Monitoring of Microseismicity in Diatomites** • T.I. Urbancic, ESG; D.C. Bleakly, Engineering Seismology Group Canada Inc. (ESG); A.S. Murer, G.R. McNeish, Aera Energy LLC; M. Prince, Engineering Seismology Group Canada Inc.
- 1130 132653 **Characterizing Fracture Development in Diatomites with Seismic Moment Tensor Inversion Analysis** • T.I. Urbancic, A. Baig, ESG Engineering Seismology Group; A.S. Murer, G.R. McNeish, Aera Energy LLC.

**Friday, 28 May, 08:30 to 12:00  
Room D  
EOR TECHNOLOGIES II**

**Session Chairpersons: Serge Yervant Baghdikian, City of Long Beach  
Baldev Singh Gill, City of Long Beach**

**2010 SPE WESTERN REGIONAL MEETING**

**Anaheim Convention Center, May 25-26**

- 0830 132456 **Characterizing the PlusFraction for EOS' Applications** • T.H. Ahmed, ANADARKO PETROLEUM CORP; D. Meehan, Baker Hughes Inc.
- 0900 133510 **Evaluation of the Effect of Wettability Alteration on Oil Recovery in Carbonate Reservoirs** • J.J. Sheng, Total E&P.
- 0930 132849 **Selection of ThreePhase Relative Permeability Model for MixedWet Reservoirs** • V. Alvarado, S. Behzadi, U OF WYOMING
- 1030 132624 **Evaluation of CO2 Injectivity From Waterflood Values** • V.R. Nagineni, R.G. Hughes, Louisiana State U.; D. D'Souza.
- 1100 132389 **Experimental Determination of Minimum Miscibility Pressure by GasOil IFT Measurements for a Gas Injection EOR Project** • D. Saini, D.N. Rao, Louisiana State U.
- 1130 132645 **Numerical Modeling of the Water Imbibition Process in WaterWet Laboratory Cores** • M. Kalaei, D.W. Green, G. Willhite, U. of Kansas.

**Friday, 28 May, 13:30 to 16:30**

**Room A**

**TIGHT PLAYS AND UNCONVENTIONAL RESERVOIRS**

**Session Chairpersons:** Joe H. Fram, Chevron Corp.  
Charles H Webb, Chevron Corp.

- 1330 133615 **Simplified and Rigorous Forecasting of Tight/Shale Gas Production** • M. Nobakht, Fekete Associates Inc.; L. Mattar, Fekete Associates Inc.
- 1400 132521 **Impact of Reservoir Characteristics on Water Production in Enhanced Coalbed Methane Operations** • K. Jessen; M. Jamshidi, U. of Southern California.
- 1430 133606 **Ensemble Based Characterization and History Matching of Naturally Fractured Tight/Shale Gas Reservoirs** • P. Ghods, D. Zhang, U. of Southern California.
- 1500 131714 **The Permeability Factor in Coalbed Methane Well Completions and Production** • I.D. Palmer, HiggsPalmer Technologies.
- 1530 133620 **Application of advanced reservoir simulation work flow in tight gas reservoirs** • J. Wang, J.R. Robinson, J.W. Thompson, Schlumberger; L. Fan, Schlumberger Consulting Services.
- 1600 133540 **A Run History of New Technologies in the Bakken Play: Multilaterals and Increased Stage Openhole Packer/Sleeve Systems** • J.G. King, Baker Oil Tools; A.S. Demarchos, Hess Corp.; N. Buffington.

**Friday, 28 May, 13:30 to 16:30**

**Room B**

**MANAGING HEAVY OIL RESOURCES**

**Session Chairpersons:** Anthony Robert Kovscek, Stanford U.  
Tom Tang, Chevron ETC

- 1330 132608 **Reservoir Simulation of Cyclic Steam Injection Including the Effects of Temperature Induced Wettability Alteration** • B. Hascakir and A.R. Kovscek, Stanford U.
- 1400 132537 **An Experimental Study of Alkaline Surfactant Flooding for Ultra Shallow Heavy Oil Reservoirs** • Y. Wu, R.M. Hunkey, MISSOURI ST; B. Bai, S. DunnNorman, Missouri U of Science & Tech.

**2010 SPE WESTERN REGIONAL MEETING**

**Anaheim Convention Center, May 25-26**

- 1430 132492 **A Critical Review of the VAPEX Process: A Journey Through Three Decades** • V. Pathak, University of Alberta.
- 1500 132458 **Efficiency Analysis of SteamOverSolvent Injection in Fractured Reservoirs (SOSFR) Method for HeavyOil Recovery** • T. Babadagli, A.M. Al Bahlani, U. of Alberta.
- 1530 134002 **Testing and History Matching of ESSAGD (Using Hexane)** • O.R. Ayodele, Shell Exploration & Production.
- 1600 131933 **Further Improvements in PoreScale Studies of SAGD Process** • O. Mohammadzadeh, N. Rezaei, I. Chatzis, University of Waterloo.

**Alternate**

- 133376 **Biodiesel as Surfactant Additive in Steam Assisted Recovery of Heavy Oil and Bitumen** • T. Babadagli, U. of Alberta; B. Ozum, Apex Eng.
- 133453 **Numerical Simulation of Thermal Solvent Replacing Steam under Steam Assisted Gravity Drainage (SAGD) process** • W. Li, D.D. Mamora, Texas A&M U.

**Friday, 28 May, 13:30 to 16:30 Room C**

**ADVANCES IN COMPLETION AND PRODUCTION OPERATIONS**

**Session Chairpersons: Stephen K Cheung, Consultant  
Bradford R Pierce, BreitBurn Operating LP**

- 1330 133619 **A Novel Oilfield Scale Control Approach insitu Ion Diversion Through Electrokinetics** • M.R. Haroun, Univ of Southern California; B. Ghosh, Petroleum Institute; S. Pamukcu, Lehigh University; J.K. Wittle. ElectroPetroleum Inc.; M.A. Al Badawi, The Petroleum Institute; G.V. Chilingar, U. of Southern California.
- 1400 133591 **Chemical Treatment to Mitigate Condensate and Water Blocking in Carbonate Gas Wells** • M. Ahmadi, D.E. Torres, M.M. Sharma, H. Linnemeyer, G.A. Pope, U. of Texas at Austin.
- 1430 133500 **Sand on Demand: An Approach to Improving Productivity in Horizontal Wells under Heavy Oil Primary Production Part II** • B. Meza Diaz, R.P. Sawatzky, Alberta Research Council; E. Kuru, U. of Alberta.
- 1500 132564 **Heavy Oil Production Enhancement by Viscosity Reduction** • P.J. Shuler, ChemEOR; Y. Tang, California Inst. of Technology; H. Tang.
- 1530 132012 **An Analysis of the Performance of Gravel Packs and Slotted Liners in Heavy Oil Operations** • N. Akhimiona, A. Auffant, T.L. Gorham, Chevron USA Production Co.; J.P. Harrelson, Colorado School of Mines.
- 1600 132605 **Gel Damage Remediation by Evaporative Mechanisms: A Laboratory Investigation** • J. Mahadevan, D.H. Le, U. of Tulsa; K.H. McQueen, The Williams Companies Inc.

**Alternate**

- 133610 **A New Model for Predicting Inflow Performance of Fractured Horizontal Wells** • H. Yuan, IHS Inc; D. Zhou, HIS.
- 133587 **Research Progress of Modelling on Cold Heavy Oil Production with Sand** • Y. Pan, ; Z. Chen, University of Calgary; L. Xiao, China university of petroleum; J. Sun, X. Bao, University of Calgary.



**2010 SPE WESTERN REGIONAL MEETING**

**Anaheim Convention Center, May 25-26**

**Friday, 28 May, 13:30 to 15:30**  
**Room D**

**SOCIAL RESPONSIBILITY, HEALTH, AIR AND WATER QUALITY AND GHG EMISSIONS**

**Session Chairpersons: Mark A Shemaria, Environmental, Health & Safety Consultant**

- |             |               |                                                                                                                                                                                                                                 |
|-------------|---------------|---------------------------------------------------------------------------------------------------------------------------------------------------------------------------------------------------------------------------------|
| <b>1330</b> | <b>133131</b> | <b>Enhancements to GPSBased Subsidence Monitoring at the Wilmington Oil Field</b> • S. Baghdikian, J.D. Jepson, K. Holtz, City of Long Beach; L. Bock, J. Fayman, G. Mader, Geodetics, Inc.                                     |
| <b>1400</b> | <b>132258</b> | <b>Technical Evaluations to Support the Decision to Reinject Produced Water</b> • E. Zuluaga, Chevron Corp.; P.J. Evans, Chevron ETC; P.R. Nesom, Chevron International E&P; P.A. Spratt, Nalco Co.; E.J. Daniels, Chevron ETC. |
| <b>1430</b> | <b>132604</b> | <b>An Analysis of the Challenges Confronting Carbon Capture and Sequestration</b> • D.J. Winslow, Chevron Corp.                                                                                                                 |
| <b>1500</b> | <b>133604</b> | <b>Remediation of Possible Leakage from Geologic CO2 Storage Reservoirs into Groundwater Aquifers</b> • A. Esposito, S.M. Benson, Stanford U.                                                                                   |

**2010 SPE WESTERN REGIONAL MEETING**

**Anaheim Convention Center, May 25-26**

**Poster Session: Thursday 12:00-13:30**

SPE-132645-PP	Kalaei, M Hosein	University of Kansas	Numerical Modeling of the Water Imbibition Process in Water-Wet Laboratory Cores
SPE-132651-PP	Mondal, Satyajit	University of Alaska, Fairbanks	Tight Gas Exploitation: A Stochastic Modeling Study of a Low Sinuosity River System Representative of Tight Gas Sandstone in Cook Inlet, Alaska
SPE-133490-PP	Sheng, James	Total E&P	New Concepts of the Optimum Microemulsion Phase Type and the Optimum Salinity Profile in Surfactant/Polymer Flooding
SPE-133611-PP	Aguilera, Roberto	U. of Calgary	STORAGE AND OUTPUT FLOW FROM SHALE AND TIGHT GAS RESERVOIRS
SPE-132626-PP	Odi, Uchenna	Texas A&M University	Ensemble Based Optimization of EOR Processes
SPE-131985-PP	Paidin, Wagirin	Louisiana State U.	The Potential of NCG-Enhanced SAGD Application in US Heavy Oil Reservoirs
SPE-133594-PP	Jahangiri, Hamid Reza	U. of Southern California	Optimization of Carbon Dioxide Sequestration and Enhanced Oil Recovery in Oil Reservoir
SPE-132515-PP	Jabbari, Hadi	University of North Dakota	A New Semi-Analytical Modeling of Toe-to-Heel Air Injection in In-Situ Combustion Process
SPE-132606-PP	Mahadevan, Jagannathan	U. of Tulsa	Productivity Loss in Gas Wells Due to Salt Deposition
SPE-133566-PP	Yousef, Ali	Saudi Aramco	Field Brine Composition Impact on Tertiary Oil Recovery from Carbonate Reservoirs- An Experimental Study
SPE-132459-PP	Babadagli, Tayfun	U. of Alberta	Mechanics and Up-Scaling of Heavy-Oil Bitumen Recovery by Steam-Over-Solvent Injection in Fractured Reservoirs (SOS-FR) Method
SPE-132700-PP	Gill, Baldev	City of Long Beach	An Analytical Methodology to Determine Oil-in-Place: Aquifer Influx and Ultimate Sweep Efficiency of a Mature Heavy Oil Waterflood in the Wilmington Basin
SPE-132633-PP	Li, Xin	Knowledge Reservoir, LLC	Investigation of Oil By-passed Mechanisms for Improved Oil Recovery in Deepwater Gulf of Mexico
SPE-133593-PP	Jung, Woodong	Texas A&M U.	Simulation of time-lapse mineral carbonation and isotope fractionation of injected CO <sub>2</sub> in aquifer: Implications for monitoring CO <sub>2</sub> sequestration
SPE-132431-PP	Babadagli, Tayfun	U. of Alberta	Calculating Equivalent Fracture Network Permeability of Multi-Layer-Complex Naturally Fractured Reservoirs
SPE-133545-PP	Liu, Shuping		Failure Prediction for Artificial Lift Systems
SPE-132534-PP	El Shaari, Nabil	BJ Services Company	Improved Well Fracture Stimulation Performance through the Application of Unique Solid Chemical Inhibitors
SPE-133533-PP	Al-Otaibi, Ajab	Colorado School of Mines	Transient Behavior and Analysis of Non-Darcy Flow in Porous and Fractured Reservoirs According to the Barree and Conway Model
SPE-132369-PP	Jiang, Haifeng	University of Wyoming	The Effect of Salinity of Injection Brine on Water Alternating Gas Performance in Tertiary Miscible Carbon Dioxide Flooding: Experimental Study

**2010 SPE WESTERN REGIONAL MEETING****Anaheim Convention Center, May 25-26**

SPE-133298-PP	Li, Weiqiang	TEXAS A&M U.	Simulation Investigation of Solvent Co-Injection in Vapor and Liquid Phase to Reduce Shale Barrier Impact on SAGD Performance
SPE-132545-PP	Cheng, Kun	Texas A&M U.	A Novel Optimization Model for Analyzing Production Data
SPE-134006-PP	Zhai, Daoyuan	U. of Southern California	An Inequality-Constrained Extended Kalman Filter for Continual Forecasting of Interwell Connectivities in Waterfloods
SPE-132363-PP	Al Shuwaikhah, Hisham	Saudi Aramco	Energy Conservation and Oil Production Opportunities in Ghawar Field in Saudi Aramco
SPE-133414-PP	Lane, Robert	Texas A&M U.	Deep Placement Gel Bank As An IOR Process: Modeling, Economic Analysis And Comparison To Polymer Flooding
SPE-133539-PP	Fuentes-Cruz, Gorgonio	Inst. Mexicano del Petroleo	A Unified Approach for Falloff and Buildup Tests Analysis Following a Short Injection/Production Time

**LASPE BOARD MEETING SUMMARY**  
**FEBRUARY 9, 2010**

1. The meeting was called to order at 10:50 AM

Attending were:

Rick Finken	Treasurer
AB Gorashi Abdulrahman	Board Member through 2011
Scott Hara	Community Outreach Chair
Candra Janova	Young Professionals Chair
Vanessa Perez	Chairperson
Rick Reeves	Board Member through 2011
Ed Santiago	Elementary Outreach
Jack Smith	Scholarship Chair
Jalal Torabzadeh	Junior Past Chair
Mike Utt	Secretary, Board Member through 2010
Bob Visser	Assistant Treasurer

2. The meeting agenda was approved.

3. The minutes of the meeting of, January 12, 2010 were approved.

4. Announcements:

- a. Annual SPE membership dues for 2010 are due – everyone should remember to pay them.
- b. Regional Award nominations (including Service Awards, Outstanding Young Member Awards and Technical Awards in various specialties) are due no later than 15 February.
- c. Jack Smith noted the upcoming schedule for Science Fairs:
  - i. Orange County on April 5
  - ii. Los Angeles County on April 14
  - iii. Long Beach in early May
  - iv. State of California on May 18 – 19

LASPE has provided sponsorship funds to some of these Science Fair events in past years.

5. Reports

- a. Treasurer's Report: For January 2010, expenses exceeded income by \$138. Expenses consisted of \$388 covering newsletter, website and hosting. Income consisted of \$250 for payment of one newsletter ad invoice plus the usual tiny amount of checking account interest. The total value of LASPE's assets was \$65,289 at January month-end.
- b. Annual Golf Tournament: It was announced that, despite a recent change of employment, Mark Shamaria will remain as Chairman of the golf tournament. Progress to date is satisfactory. The brochures have been completed, and a copy was passed around the meeting. Prices for the

**MINUTES CONTINUE...**

tournament have been set at 2008 levels; back up from a discounted level in 2009. The PayPal link is accepting payments on the LASPE website ( [www.laspe.org](http://www.laspe.org) .) Some income is expected during February. The tournament organizers' goal is 288 golfers, and full participation in the raffle.

- c. Student Chapters: Sam Sarem (Western Region Director, SPE International) is requesting periodic reports (monthly or at least quarterly) from the SPE Student Chapters in the Region. Jalal Torabzadeh noted that there are opportunities to speak to the SPE Student Chapter at Cal State Long Beach. Meetings are at lunchtime on Wednesdays, and include a 30 to 45 minute presentation to 20 to 40 interested students.
- d. Outreach Opportunity: Vanessa Perez noted a recent request from at Patrick Henry High School in San Diego to participate in a career day on Wednesday, March 3. Candra Janova indicated that the Young Professionals group might be able to respond to that request.

**6. Old Business**

- a. Western Region Meeting Technical Sessions. An organizational meeting was held at USC on Tuesday, January 19, hosted by Professor Iraj Ershaghi. The papers submitted for the meeting were ranked and the best papers grouped into technical sessions by topical area. During and following that meeting, session chairpersons and co-chairpersons were selected.
- b. Legion of Honor: Within LASPE's area there are a number of Legion of Honor members (50 years of continuous SPE membership.) Rather than schedule one meeting for presenting plaques to them, it was decided to invite them to attend a Forum meeting at their convenience to receive their awards.

**7. New Business**

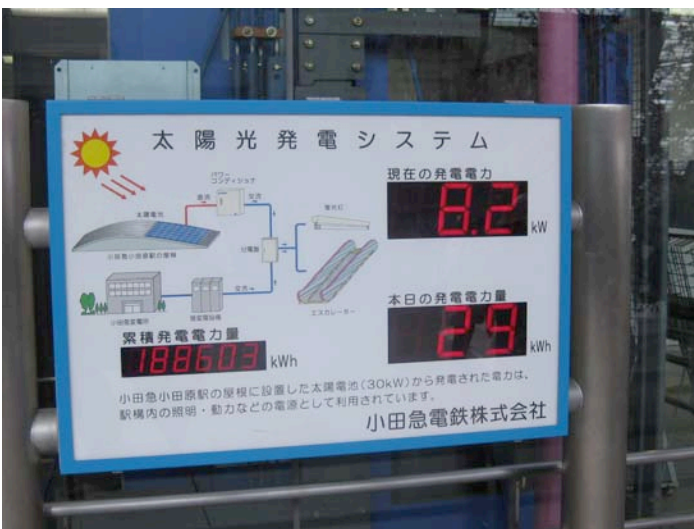
- a. Western Region Meeting Workshops and Tours. AB Goras and Scott Hara reported progress on identifying workshops of interest to the industry. Working with the Petroleum Technology Transfer Council (PTTC) they have decided on 9 workshop topics. As of meeting time, they had course descriptions and confirmed instructors for 6 of those 9 workshops, to be held on Tuesday, May 25 and Wednesday, May 26, the two days before the Western Region Meeting. The location is planned to be the Anaheim Convention Center, across the street from the Marriott Hotel where the Western Region Meeting will be held.
- b. There are 2 tours planned in conjunction with the Western Region Meeting: a tour of THUMS and a tour of Los Angeles area oilfields, including urban oilfields.
- c. Chairperson Vanessa Perez announced that Mike Utt had accepted an invitation to become Vice Chairman of the board. The board voted to name Mike to fill that vacancy for the term through September, 2010.
- d. The deadline for applications for LASPE Scholarships is Friday, April 9. As of meeting time, no scholarship applications had been received, but this is not unusual or unexpected.
- e. Jalal Torabzadeh proposed to the Board that LASPE should consider naming a scholarship for the late Ed Mayer (subject of a tribute in the February LASPE Newsletter.) The response of board members was generally favorable, but no motion was proposed.

**8. The meeting was adjourned at 11:55 AM**

## Board Member, Dr. Eric Withjack, Teaches Basic Core Analysis in Japan

In mid February, a member of the LA Basin Board, Dr. Eric Withjack, dedicated a week of his time to teaching a course on basic core analysis at the Technology and Research Center of the Japan Oil, Gas and Metals National Corporation (JOGMEC) in Chiba. The course was attended by fifteen engineers and geologists from five oil and gas companies involved in research, exploration and production activities. The visit was a great opportunity to broaden one's technological perspective of our great industry. It also afforded an opportunity to promote the SPE Western Region Meeting in sunny SoCal!

I wanted to mention that Japan is the third largest consumer of oil in the world (behind the United States and China), and the world's largest consumer of LNG. Their oil and gas industry thus strives to secure stable reserves for the nation, which is essentially dependent on foreign hydrocarbon imports. I've included a few snapshots that reflect the energy consciousness of the country.



SOLAR MONITOR (ODAWARA STATION PLATFORM)



SOLAR ARRAY ROOF (ODAWARA, JAPAN)



CONVENIENT HIGH-SPEED RAIL (ODAKYU)



GEOTHERMAL VENTS (HAKONE, CENTRAL JAPAN)

## POSITION AVAILABLE

### Director of Business Development - Western Region

Quantapoint, the world's most experienced and trusted provider of existing conditions documentation using integrated laser scanning, has an immediate opportunity for Director of Business Development for our 13-state Western Region and western Canada.

If your background matches the following requirements, we need to meet!:

- Demonstrated ten years success in selling technical services and software to Engineers
- Experience in selling in upstream oil & gas, chemical, refining or power industries
- Positive, self-confident new business development professional who is passionate about the full sales process from beginning to end
- Cares about developing and maintaining long-term customer relationships
- Ability to quickly learn the laser scanning and software components of our business
- BS degree in Engineering (Petroleum, Chemical, Process, etc.) preferred but not required
- Travel up to 50% , with many day trips within the LA Basin, and travel to other locations within 13-state region and western Canada

This exciting opportunity offers a great compensation package, including a very competitive base salary and incentive commission plan, plus an attractive Employee Benefits package. For prompt and confidential consideration, please email your resume, including salary history, to Ned Frazier with Frazier International: [ned@frazierintl.com](mailto:ned@frazierintl.com). For more information on Quantapoint go to [www.quantapoint.com](http://www.quantapoint.com).

## SERVICES OFFERED

**Steve Lieberman**  
**Consulting Petroleum Engineering**  
949-242-3636  
[www.americanenergyadvisors.com](http://www.americanenergyadvisors.com)

### Property Sales

(We market your property to more than 12,000 Buyers nationwide)

### Investor Capital

(Need Capital? Can't borrow? We have investors for your projects)

### Property Valuations

(Inexpensive exploitation studies/market value determination)

### Contract Operations

(We will operate your property for you - L.A. Basin area, only)

### Reservoir/Operations Evaluations

(Identify upside. Reduce operating costs. Automate your operation.)

**American Energy Advisors, Inc.**  
**2081 Business Center Drive, Ste 100**  
**Irvine, CA 92612**

**DAVID B. DEL MAR**  
**Consulting Petroleum Geologist**  
California Registered Geologist #634

Development - Thermal EOR - Property Reviews

2027 Park Drive  
Los Angeles, CA 90026

C (323) 219-3804  
H (323) 664-3358  
[dbdelmar@earthlink.net](mailto:dbdelmar@earthlink.net)

**Reservoir Management**  
**Drilling Programs**  
**Waterflood Optimization**  
**Tertiary Recovery / EOR**  
**Economic Evaluation**  
**Acquisition and Divestitures**

**Scott W. McGurk**  
**Petroleum Engineering Consultant**  
LA Basin SPE 2007 Past Chairman  
714-403-9839  
[LOVESM@IX.NETCOM.COM](mailto:LOVESM@IX.NETCOM.COM)

## CURRENT BOARD, OFFICERS & CHAIRS

Current Board, Officers and Chairs		
E-mail	Names	Position
<a href="mailto:brandy_fellers@earthlink.net">brandy_fellers@earthlink.net</a>	Brandy Fellers	Senior past chair
<a href="mailto:Candra_Janova@oxy.com">Candra_Janova@oxy.com</a>	Chandra Janova	Young Professionals
<a href="mailto:dremmw@yahoo.com">dremmw@yahoo.com</a>	Eric Withjack	Board Member-2010
<a href="mailto:emayer2@socal.rr.com">emayer2@socal.rr.com</a>	Ed Mayer	Awards and Recognition
<a href="mailto:SantiaE@slc.ca.gov">SantiaE@slc.ca.gov</a>	Ed Santiago	Elementary Outreach
<a href="mailto:goras9@aol.com">goras9@aol.com</a>	AB Gorashi	Board Member-2011
<a href="mailto:Katherine_Wallgren@oxy.com">Katherine_Wallgren@oxy.com</a>	Katherine Wallgren	Forum Chair
<a href="mailto:Larry@4thForge.com">Larry@4thForge.com</a>	Larry Gilpin	Webmaster
<a href="mailto:Mark_Shemaria@oxy.com">Mark_Shemaria@oxy.com</a>	Mark Shemaria	Golf Tournament Chair
<a href="mailto:mikeutt@roadrunner.com">mikeutt@roadrunner.com</a>	Mike Utt	Board member-2010
<a href="mailto:PerezV@slc.ca.gov">PerezV@slc.ca.gov</a>	Vanessa Perez	2009-2010 Chairperson
<a href="mailto:Rcvbelmar@aol.com">Rcvbelmar@aol.com</a>	Robert Visser	Assistant Treasurer
<a href="mailto:Rick_Reeves@oxy.com">Rick_Reeves@oxy.com</a>	Rick Reeves	Board member-2011
<a href="mailto:Sam4IPRC@aol.com">Sam4IPRC@aol.com</a>	Sam Sarem	Nominating Committee
<a href="mailto:Scott_Hara@oxy.com">Scott_Hara@oxy.com</a>	Scott Hara	Community Outreach
<a href="mailto:SmithjL@slc.ca.gov">SmithjL@slc.ca.gov</a>	Jack Smith	Scholarship Chair
<a href="mailto:torabzad@csulb.edu">torabzad@csulb.edu</a>	Jalal Torabzadeh	Junior past chair
<a href="mailto:lovesm@ix.netcom.com">lovesm@ix.netcom.com</a>	Scott McGurk	2006-2007-Past year
<a href="mailto:Richard.finken@longbeach.gov">Richard.finken@longbeach.gov</a>	Rick Finken	Treasurer
<a href="mailto:rweibel@semprautilities.com">rweibel@semprautilities.com</a>	Rudy Weibel	

Please notify SPE Headquarters directly with change of address: P.O. Box 833836, Richardson, TX 75083 Tel: (800) 456-6863 Fax: (972) 952-9435 or go to <http://www.spe.org/mbrservices/index.cfm> We appreciate your feedback. Send your comments/suggestions/contributions to Larry Gilpin, Editor: [larry@4thforge.com](mailto:larry@4thforge.com)

VISIT the LA SPE Web Site @ [www.LASPE.org](http://www.LASPE.org)





# **Client Education and Training**

**presented by**

**John Dacy, Technical Director of Rock Properties**

**Day 1 Fundamentals of Core Analysis**

**Day 2 Advanced Rock Properties**

**Day 3 Using Core Data in Formation Evaluation**

**Location: Petroleum Club**

**Date: May 11-13, 2010**

**Time: 9-4pm**

**Cost: \$425.00**

**Cost includes workbook, CD, continental breakfast, & lunch**

**For more details & RSVP (space is limited) please contact**

**Linda Specht at 661-325-5657**

**[linda.specht@corelab.com](mailto:linda.specht@corelab.com)**

**Larry Kunkel 661-325-5657**

**[larry.kunkel@corelab.com](mailto:larry.kunkel@corelab.com)**

## 2010 CLIENT EDUCATION AND TRAINING PROGRAM

May 11

### **The Fundamentals of Core Analysis:**

Review of fundamental controls on reservoir & basic core properties of porosity, permeability, and saturation. Wellsite and lab sampling, core preparation, and measurement methods described along with discussion of merits and limitations. Core gamma, grain density, resistivity, acoustic velocity reviewed to assist in data application.

May 12

### **Advanced Rock Properties:**

Detailed description of advanced testing that is available on core: static tests for reservoir description (capillary pressure, acoustic velocity, electrical properties, wettability, and pore volume compressibility) and dynamic tests for performance evaluation (relative permeability, water, gas, Steamfloods, and formation damage tests). A general discussion of factors influencing core sample suitability, selection, and special preparation precedes a review of the measurements which are discussed with respect to methodology, advantages, limitations, and data applications. Mineralogical effects on rock properties, both in the lab and the reservoir, are discussed throughout the course.

May 13

### **Using Core Data in Formation Evaluation:**

Combination of routine and special core data to resolve/validate log-based FE. Brief review of rock property fundamentals & Measurements followed with focus on key equations, calculations, modeling of results.